



**Rust Dyeing and Stitched Collage  
with Jo Budd**

**Thursday 18th—Monday 22nd July 2013**

## What can I expect from the course?

Throughout the four day workshop you will gain a good knowledge of the rust dyeing process and its possible applications.

You will explore how to create pattern and exploit the inherent qualities of the metals to achieve a variety of samples using the rust dyeing process.

Following this you will explore abstract and intuitive composition in response to the fabrics you have created. Rusted fabrics will be collaged using hand and machine stitching onto canvas backing. You will take home a range of samples, one, or several larger compositions for further development with stitch, or a series of smaller pieces.

Over the workshop you will be supported to gain confidence in the techniques demonstrated and will benefit from the opportunity to discuss ideas individually with your tutor and fellow students.



## What can I expect from my tutor?

Jo Budd is both a practicing artist and experienced teacher. You will enjoy a fun, relaxed and supportive learning environment, where you are able to progress at your own pace. The session content will be a mix of tutor led demonstrations, one to one tuition, group discussion and independent experimentation.

Jo will also give an illustrated talk about her work. with samples and finished pieces



## What shall I bring?

### Essential

A selection of pre-prepared raw steel objects (**see student preparation section overleaf**)

An old bucket (beware this will get rusty!)

A pair of heavy duty plastic gloves

An old apron/protective clothing

Fabrics

White and plain colours, any fibres, synthetic and natural, try to include some lightweight fabrics and sheers (e.g. silk or nylon chiffon, habotai, cotton organdie) as the process works particularly well on these, and some looser weave fabrics. Please bring any plain hand dyed fabrics if you have them. Patterned fabrics can give an interesting effect and fabrics pre dyed with plant dyes or tea will give different shades. (see tea dye instructions).

Recycled fabrics are good— any shape, any size! (1/2mtr or less is fine) if fabrics are new they need washing first.

(There will be some fabrics provided and some for sale)

Old wool or other thick blanket/ rug (used double to cover table for soft print surface)

Heavy calico or 7 to 9oz un-primed canvas (this will be available to buy from your tutor)

Dressmaking pins

Sharp fabric scissors

Sewing cotton various colours

Hand sewing needles

An old towel or soft absorbent cloth (for ironing out fabrics)

Wet weather clothing (just in case! For the inspiration trail)

**You may also wish to bring the following...**

Hand & machine embroidery threads

Invisible nylon thread

A notebook

A sketchbook

Drawing materials (a limited range will be provided)

A wire brush

An electric blanket (heat helps to progress the process)

A camera and USB lead (to enable photos to be printed out)

## Student Preparation

Please bring items made from iron (not stainless steel) or other ferrous metal objects.

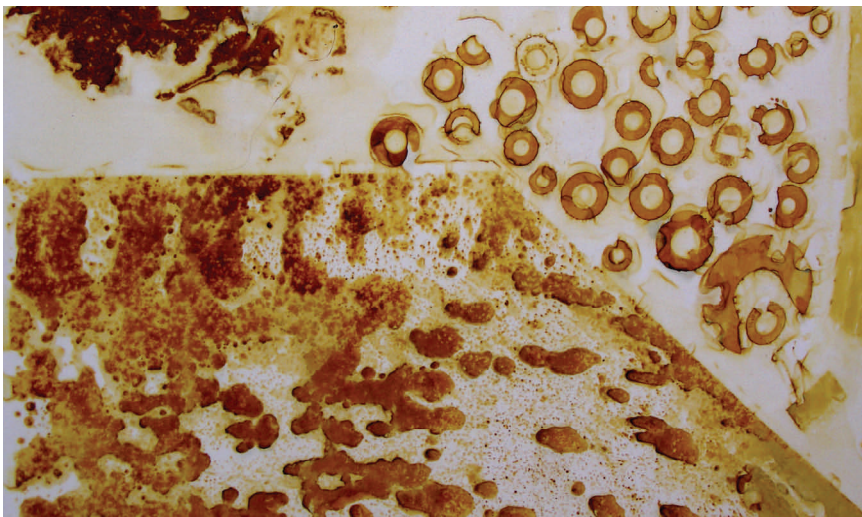
These can be 'flat' e.g. washers, saw blades, metal mesh, nails, screws, baking trays, rusted wire, metal plate for the printing process or '3D' e.g. old tools, horseshoes, kitchen paraphernalia. Some of your objects will be used to print from and others wrapped.

To prepare for the workshop, if your objects are very rusty, soak in vinegar, rinse and scour with wire brush, wire wool or emery paper, to remove most of the rust and then rinse with water. This may need to be repeated several times. The idea is to remove old rust (it will re-rust quickly but you will have less scrubbing on the day).

New metal works well e.g. cheap nails, screws, washers, but must be washed with detergent to remove any coating of oil or grease and if possible soaked and scoured in the same way (some new metals have a plastic coating – beware!). Older metals can give more varied marks.

The tutor will bring a selection of metals to work with but please try to bring as much as you can.

NB please don't bring any very sharp objects.



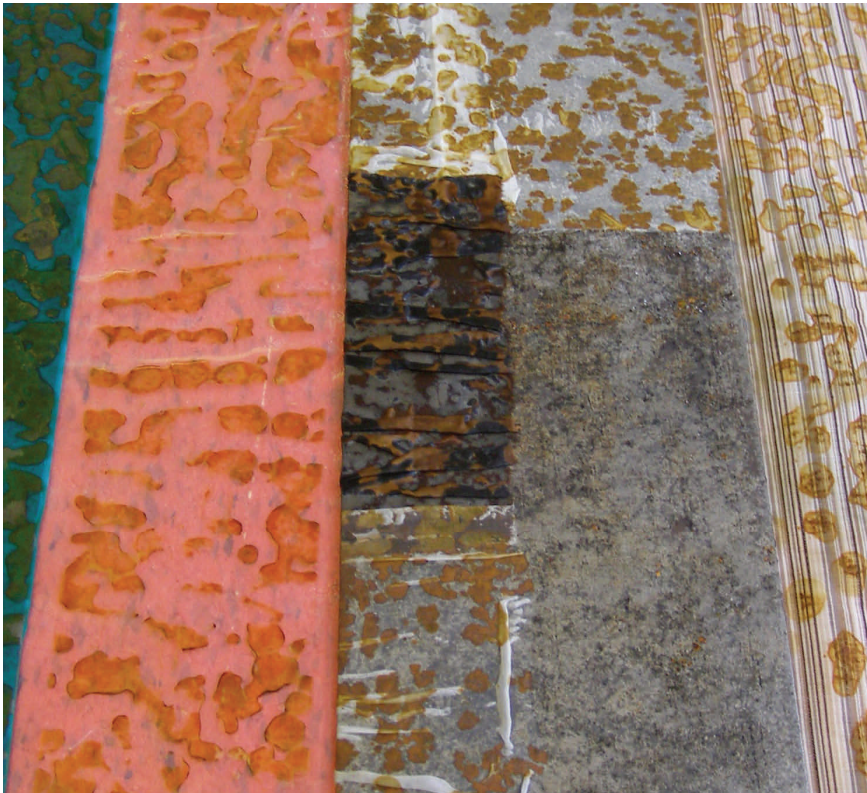
## Tea Dyeing Instructions (optional)

Boil 4 cups water in a large pot. Remove from heat. Add 8 teabags and allow 5 minutes for the tea to stew. Meanwhile rinse and wring out fabric (natural fibres such as cotton silk & linen work best) in warm water and a little detergent if needed.

Remove teabags and put damp fabric into tea solution agitating with a wooden spoon for several minutes. When the fabric reaches a shade slightly darker than required remove from tea solution. Rinse fabric in cold water until water runs clear. Check colour, if you require a darker shade return fabric to tea solution for longer.

Dry fabric and press with a hot iron to set the dye.

NB. The amount of teabags used can be adjusted to suit shade required.



## Course Outline

### Thursday

- 16.30-17.30 Welcome & registration in the Drawing Room
- 18.00 Buffet Supper
- 20.00 Talk from Jo Budd—  
Introduction to her work & inspiration

### Friday

- 8.00-9.00 Breakfast in the Dining Hall
- 10.00 Welcome in the Art Room  
Introduction to the technique  
Preparation of metals
- 13.00 Lunch in the Dining Hall
- 14.00-16.00 Compositions of metals onto flat fabrics  
Introduction to wrapping techniques
- 18.00 Hot Supper in the Dining Hall
- 19.00– 20.30 Preparation of metals  
Wrap 3D objects

### Saturday

- 8.00-9.00 Breakfast in the Dining Hall
- 10.00 Inspiration trail; beach walk  
Bring your camera and gather inspiration for  
compositions on Sunday  
Some may wish to bring sketchbook/drawing  
materials also
- 12.30 Picnic lunch (weather permitting)
- 14.00-16.00 Reveal & rinse flat prints  
Reveal & Rinse wrapped fabrics
- 18.00 Hot Supper in the Dining Hall
- 19.00-20.30 Wash, Iron & Prepare fabrics for next day

## **Sunday**

- 8.00-9.00 Breakfast in the Dining Hall  
10.00 Demonstration of composition  
Compose pieces ready for afternoon session  
13.00 Cold lunch in the Dining Hall  
14.00-16.00 Demonstration of stitch techniques  
Sampling with stitch  
18.00 Hot Supper in the Dining Hall  
19.00-20.30 Opportunity for independent experimentation  
Film Night in the Common Room

## **Monday**

- 8.00-9.00 Breakfast in the Dining Hall  
10.00 individual tutorials  
Composition with stitch  
13.00 Cold lunch in the Dining Hall  
14.00 Finish Compositions  
Group discussion of compositions achieved  
16.00 Depart

Where needed, activities may be subject to slight alteration.







## **Beeston Hall School**

Beeston Hall School was established in 1948 in a Regency house on the North Norfolk coast. Situated half-a-mile from the sea in 30 acres of beautiful countryside, the school fields adjoin the National Trust estates of Felbrigg and Sheringham, and provide an idyllic rural environment for this residential course. Within the grounds are tennis courts which are available for use as well as access to woodland walks.

### **Accommodation**

As Beeston Hall is a boarding school, the sleeping accommodation is arranged in dormitories. Most beds are bunk beds that sleep 4, 6 and 8 per room. There is the opportunity for shared or single occupancy per room depending on individual preference. Only the bottom bunks will be booked out, leaving the top bunks available for midnight feasts! Please bring your own sleeping bag or bottom sheet, quilt and pillow as these will not be provided. There are newly refurbished shower facilities, as well as a private bathroom, for those who prefer.

NB We will be the only group using the school, however there are no locks on the dormitories so please keep valuables with you.

## **Meals**

Breakfast, lunch and evening meals will be served by Beeston Halls catering team in the light and airy Dining Hall. See the sample menu. Please advise us of any dietary requirements at time of booking.

## **Local Amenities**

10 minutes walk into West Runton, is the Village Inn Public House, convenience store, newsagents and church.

20 minutes walk will take you to Sheringham, a busy seaside town. The town hosts a Saturday Market, as well as numerous pubs, cafes and restaurants. There is an eclectic mix of independent and High Street shops. Within the town there are several churches, galleries and museums. Sheringham also has a working steam railway.

10 minutes by car will take you Cromer, a Victorian seaside resort. The Pier has one of the last remaining Summer Variety theatres in the country. The town has several large supermarkets, pubs, cafes, restaurants, shops, galleries and museums. Cromer church is famed for the highest tower in Norfolk (over 50m), visitors can climb the 150 steps of the steep spiral staircase and enjoy the magnificent view.

Within the local area there are 2 leisure centres both with swimming, gym and sauna facilities. Splash Leisure Centre is a 5 minute car journey and Pinewoods approx. 15 minutes drive away.

North Norfolk boasts a beautiful coastline with blue flag beaches, the marshes attract an array of wildlife including rare and migrating birds. You might like to extend your stay to make the most of the local area.

Local information (including maps) will be made available on arrival.



## What is the cost of the course?

The 4 day workshop & accommodation cost is **£400.00.**

**A £100.00 deposit\*** is payable at the time of booking and the remainder should be paid by **Monday 3rd June 2013.**

Please note that due to a limit on numbers, booking is essential prior to the start of the course.

\*Booking cancellations will be subject to a £25 fee. Unfortunately after 4th July 2013 we will be unable to refund deposits, however the balance will be refunded via cheque or internet bank transfer.

## Contact Details

Hannelore Smith

Mobile: 07789985008

[info@pinsnandneedlesnorfolk.co.uk](mailto:info@pinsnandneedlesnorfolk.co.uk)

## Where & When?

Beeston Hall School

West Runton, Norfolk, NR27 9NQ

18th—22nd July 2013